



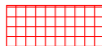


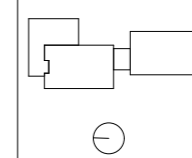


- |   |                         |   |                                     |
|---|-------------------------|---|-------------------------------------|
|  | Bestandswand (StB)      |  | Abbruch                             |
|  | Neubau Stahlbeton (StB) |  | Neubau Wände Brandschutzanforderung |
|  | Neubau Mauerwerk (MW)   |  | Neubau Betonfertigteile             |
|  | Neubau Trockenbau (TB)  |  | Neubau Dämmung                      |

**Ausschreibungsunterlage, zur Ausführung nicht freigegeben!**

SANIERUNG EINES WOHNHAUSES  
FÜR STUDIERENDE  
Jakobsplan, 99423 Weimar



Architekten / Generalplaner	ARGE Jakobsplan Weimar   Junk & Reich   Hartmann + Helm c/o Junk & Reich Architekten BDA Planungsgesellschaft mbH Nordstraße 21, 99427 Weimar		
Darstellung	Grundriss Dachaufsicht - Abbruch/ Neubau		
Bauherr	Studierendenwerk Thüringen	Maßstab 1:250	Datum 16.10.2017
		Plannummer AU_G_DA_13	